

# LED LuminAir Fan & Light Ventilation Kit

- Unique fan and light combination
- IPX7 rated inlet assembly
- Suitable for shower enclosures and wet areas - can be used within reach of a person using a bath or shower
- Safety extra low voltage (SELV) fan and lamp
- Easy installation
- White and Chrome bezels available
- LED Lamp



## SELV Fan & Light Combination

LuminAir is also available in the form of a ventilation kit which, in addition to the fan and light combination, comes with a 90° bend, 3M of flexible ducting, wall grille and cable ties. The IPX7 unit is installed directly over a shower in complete safety.

Vent-Axia LuminAir extracts moisture and humidity at source, preventing damaging condensation from spreading. At the same time it bathes the shower enclosure in a rich soft light - bringing any dark shower to life. Ideal for all types of bathroom and shower applications, and is particularly suitable for bedsit and en-suite shower installations. LuminAir has a LED MR16 3W DC 12V lamp, to give a pool of soft warm light. The lamp has a long life and is simple to change.

Separate LED Driver also supplied, Input: AC100-240V, 50/60Hz, Output: DC12V 500mA, LED Power - 3-5W.

## Models

LuminAir L, T or H SELV fan and light, choice of bezel, 90° bend, 3m of flex-duct, wall grille and cable ties.

### LuminAir Shower Ventilation Kit L (Switch Live)

Provides simultaneous fan and light operation from the bathroom light switch.

Stock Ref

**453410 (White)**

### LuminAir Shower Ventilation Kit T (Timer)

Switches the fan On with the light. When the light is switched Off, the fan continues to run for an adjustable set period.

Stock Ref

**453413 (White)**

### LuminAir Shower Ventilation Kit H (Humidistat)

Combines a light activated by the bathroom light switch and an Ecotronic Humidistat Sensor which will switch the fan On whenever the humidity level warrants.

Stock Ref

**453416 (White)**

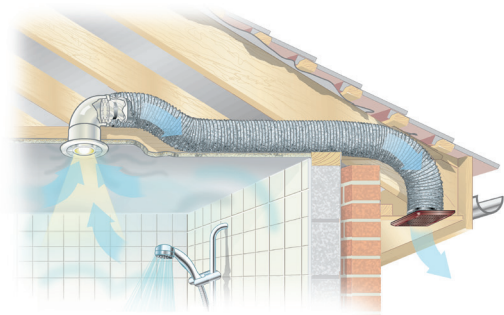
## Accessories

Optional Bezels

Stock Ref

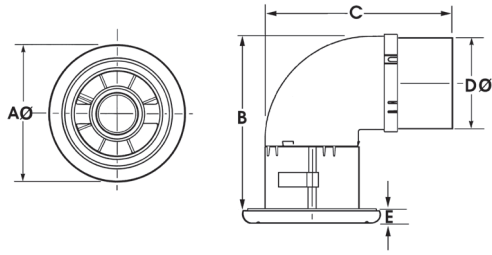
**452044 (Chrome)**

## Installation Example

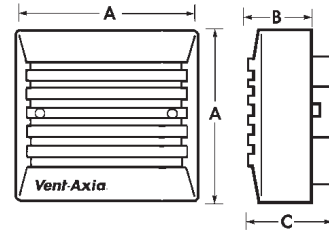


## Dimensions (mm)

### Vent Light



### Humidity Sensor



Model	AØ	B	C	DØ	E
Vent Light	150	180	139	98	10
Humidity Sensor	87	33	47		

Fixing hole diameter 110mm

## Performance

Model	Extract Performance - FID		Watts		Sound dB(A)	Amps
	m <sup>3</sup> /h	l/s	Fan	Lamp	@ 3m	@ 240V
LuminAir Ventilation Kit L/T/H	110	31	20	3	35	0.2