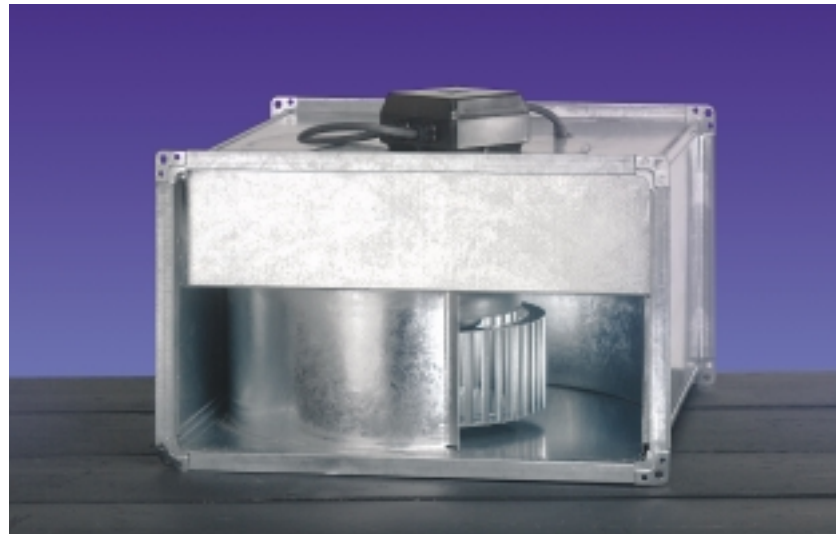


VENT-AXIA EUROFLOW™ RECTANGULAR IN-LINE FANS (KDF)



- ✓ Available in five sizes.
- ✓ Motors protected to **IP55**.
- ✓ Terminal Box rated to **IP55**.
- ✓ Motor Insulation Class F.
- ✓ High Quality Heavy Gauge Galvanised Steel Casing.
- ✓ Operating Temperatures from -40°C up to +70°C.
- ✓ Standard Thermal Overload Protection. (S.T.O.P.).
- ✓ Quick connecting 20mm Mez Flanging.
- ✓ Quality Assurance to **BS EN ISO 9001**.
- ✓ Performance tested to **BS 848** Part 1.

The KDF Euroflow Rectangular In-line range has been especially designed to be installed within rectangular ducted systems or where the space for installation is limited within the ceiling void.

The Euroflow range is available in five models with extract performance ranging from 0.3m³/s up to 1.155m³/s (1,080m³/h to 4,158m³/h), with pressure characteristics of up 500Pa.

A full range of optional accessories is available with the KDF range, such as, Bag Filter cassettes, Attenuators, flexible connections, mounting brackets and anti vibration mounts, allowing a customised modular supply or extract system to be designed.

The unit casing is manufactured from Heavy Gauge Galvanised Steel fitted with 20mm Mez inlet and outlet flanges. To meet COSHH requirements, all models incorporate a maintenance inspection cover to access the motor / impeller assembly without having to remove the complete fan casing from the ducting during. Assembly is controlled to **BS EN ISO 9001**.

IMPELLERS

The unit features a forward curved centrifugal impeller and external rotor motor specifically chosen to maximise the Euroflow performance characteristics. The assembly is dynamically balanced to **VDI 2060** Quality Class G.6.3.

MOTORS

Motors are protected to **IP55**, against dust and water jets complying with **BS EN 60529**. Motor insulation is Class F as a minimum; suitable for operating temperatures from -40°C to +70°C.

The motors are wound, to suit 230V/1ph/50Hz or 400V/3ph/50Hz electrical supply. 1 phase motors are permanent capacitor type to optimise efficiency. Standard Thermal Overload Protection (S.T.O.P.), by means of a thermal contact switch incorporated within the windings, is provided to prevent motor damage due to overloading/overheating. Most models are suitable for speed control by either electronic, or 5-Step Auto Transformer.

TERMINAL BOX

An **IP55** terminal box is supplied with all models with 20mm and PG11 entry, protected against dust and water jets from any angle ensuring suitability for external use.

PERFORMANCE

The fan performance is in accordance with tests to **BS 848** Part 1.

SOUND LEVELS

Fan sound levels, measured in a reverberant chamber in accordance with **BS 848** Part 2. Published dB(A) figures are free field sound pressure levels at 3m with spherical propagation at a reference level of 2×10^{-5} Pa (20 micro-Pascal). The inlet and outlet sound power level spectra figures are dB with a reference of 10^{-12} Watts (1 pico-watt). An auto transformer speed control is recommended for quiet motor operation.

QUALITY ASSURANCE

Design and manufacture is in accordance with the standard for quality management systems **BS EN ISO 9001**.

EUROFLOW™ RECTANGULAR IN-LINE FANS PERFORMANCE GUIDE

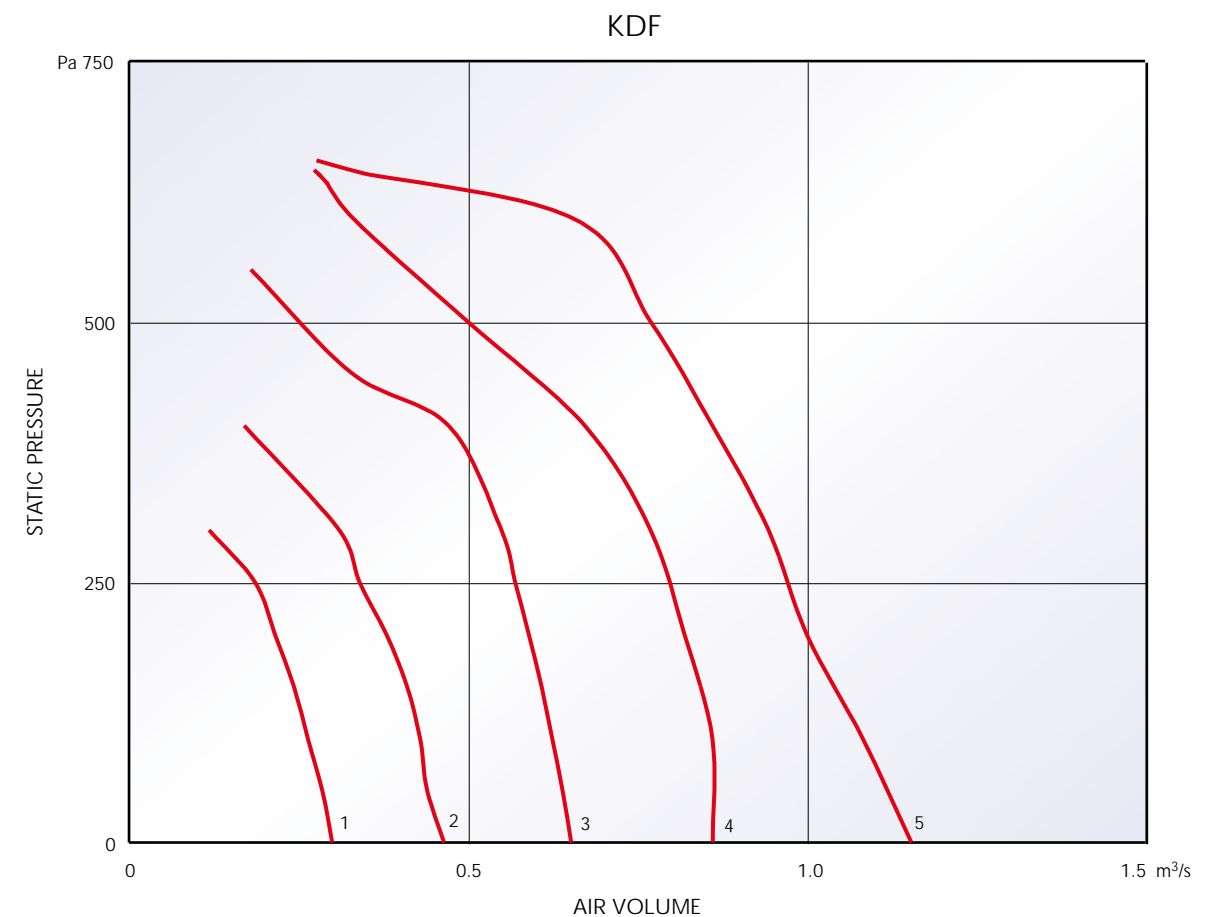
4 POLE

m³/s at Pa

Duct Size		Stock											Motor	S.C.	F.L.C.	dB(A)		
W x H	Motor	Ref. No.	r.p.m.	0	50	100	150	200	250	300	400	450	550	600	kW	Amps	Amps @ 3m	@ 3m
400 x 200	1 Phase	KDF 200-14V	1240	0.300	0.285	0.264	0.243	0.215	0.186	0.118					0.24	4.20	1.15	57
500 x 250	1 Phase	KDF 225-14V	1130	0.465	0.440	0.430	0.410	0.380	0.340	0.310	0.170				0.52	9.80	2.45	65
500 x 300	1 Phase	KDF 250-14V	1130	0.653	0.640	0.625	0.609	0.590	0.570	0.550	0.472	0.330	0.180		0.95	17.60	4.40	66

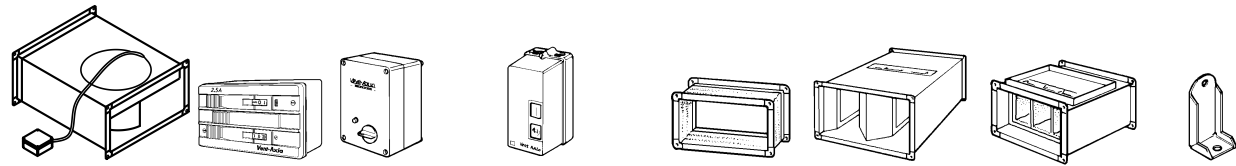
Duct Size		Stock										Motor	S.C.	F.L.C.	dB(A)
W x H	Motor	Ref. No.	r.p.m.	0	100	200	300	400	500	600	650	kW	Amps	Amps @ 3m	@ 3m
600 x 300	3 Phase	KDF 280-34V	1070	0.862	0.861	0.820	0.770	0.673	0.500	0.330	0.277	1.26	7.20	2.40	68
600 x 350	3 Phase	KDF 315-34V	1390	1.155	1.083	1.000	0.944	0.861	0.770	0.653	0.277	2.44	13.80	4.60	70

PERFORMANCE CURVES



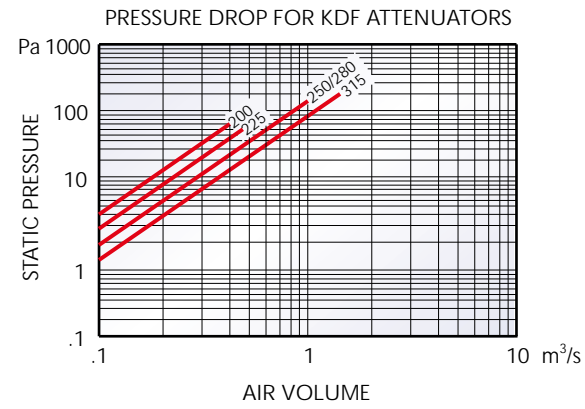
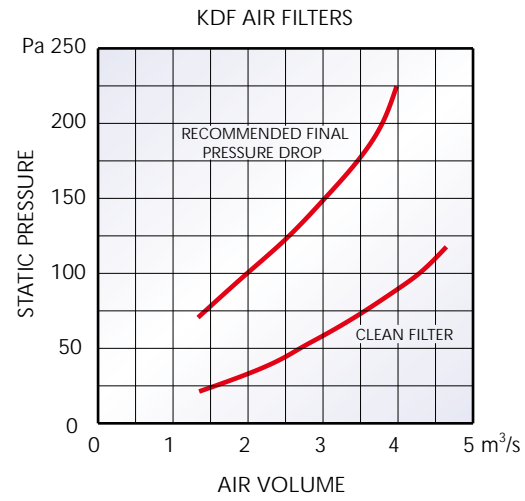
Size	200	225	250	280	315
	1	2	3	4	5

VENT-AXIA EUROFLOW™ RECTANGULAR IN-LINE FANS ACCESSORIES



Stock Ref. No.	Electronic controller Stock Ref. No.	Auto transformer Stock Ref. No.	D.O.L starter & coil Stock Ref. No.	Flexible Connection Stock Ref. No.	Rectangular Attenuator Stock Ref. No.	Rectangular Bag filter cassette Stock Ref. No.	Mounting Feet & AV's Stock Ref. No.	Acoustic Jackets Stock Ref. No.
KDF 200-14V	W103 03 102M	103 14 103	103 11 240 + 103 12 018	KFC 200	RUKDS 200	KDFF 200	KAVM1	KAJ 200
KDF 225-14V	W103 03 102M	103 14 103	103 11 240 + 103 12 040	KFC 225	RUKDS 225	KDFF 225	KAVM1	KAJ 225
KDF 250-14V	103 03 106A	103 14 105	103 11 240 + 103 12 070	KFC 250	RUKDS 250	KDFF 250	KAVM1	KAJ 250
KDF 280-34V	-	103 14 304	103 11 240 + 103 12 040	KFC 280	RUKDS 280	KDFF 280	KAVM1	KAJ 280
KDF 315-34V	-	103 14 307	103 11 240 + 103 12 070	KFC 315	RUKDS 315	KDFF 315	KAVM1	KAJ 315

ACCESSORIES DATA



EUROFLOW™ RECTANGULAR IN-LINE FANS SOUND DATA

Sound Power Level Spectra dB (re 10⁻¹² Watts)

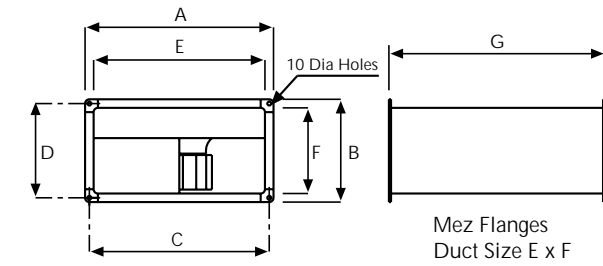
Size		63	125	250	500	1k	2k	4k	8k	dBA @ 3m
KDF 200-14V	INDUCT	64	63	66	70	72	70	70	62	57
KDF 225-14V	INDUCT	72	70	75	79	78	78	76	68	65
KDF 250-14V	INDUCT	70	73	74	80	81	82	80	73	66
KDF 280-34V	INDUCT	73	74	77	82	81	83	80	72	68
KDF 315-34V	INDUCT	81	80	83	88	90	92	90	82	70

Attenuator, Insertion Losses

Stock Ref. No.	63	125	250	500	1k	2k	4k	8k
RUKDS 200	-1	-2	-7	-16	-20	-20	-16	-12
RUKDS 225	-3	-5	-10	-18	-25	-25	-18	-14
RUKDS 250	-3	-5	-10	-18	-25	-25	-18	-14
RUKDS 280	-4	-6	-12	-20	-27	-27	-20	-16
RUKDS 315	-5	-9	-17	-28	-37	-37	-29	-24

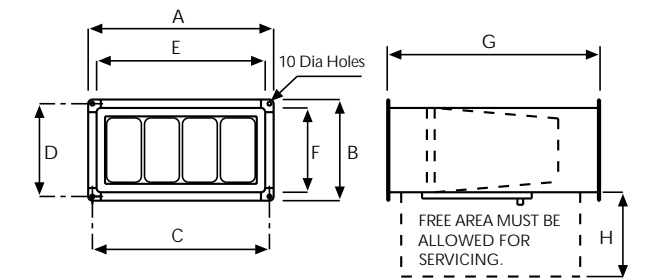
DIMENSIONS (mm)

EUROFLOW IN-LINE FAN



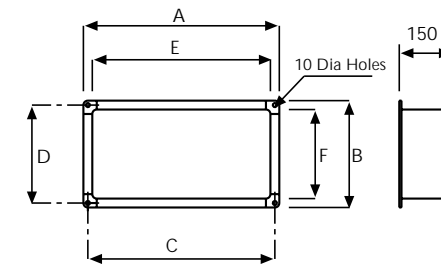
Model	A	B	C	D	E	F	G	Weight
KDF 200V	440	240	420	220	400	200	505	15kg
KDF 225V	540	290	520	270	500	250	900	20kg
KDF 250V	540	340	520	320	500	300	900	25kg
KDF 280V	640	340	620	320	600	300	900	32kg
KDF 315V	640	390	620	370	600	350	1200	42kg

BAG FILTER CASSETTE



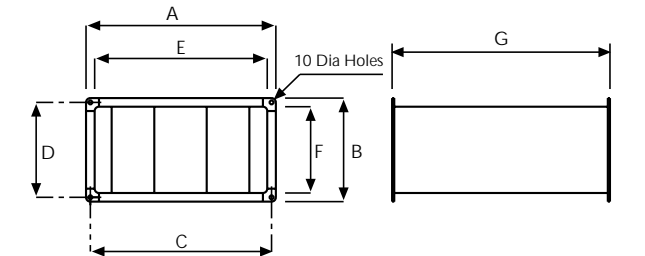
Model	A	B	C	D	E	F	G	H
KDFF 200	440	240	420	220	400	200	500	200
KDFF 225	540	290	520	270	500	250	530	250
KDFF 250	540	340	520	320	500	300	560	300
KDFF 280	640	340	620	320	600	300	640	300
KDFF 315	640	390	620	370	600	350	715	350

FLEXIBLE CONNECTION



Model	A	B	C	D	E	F
KFC 200	440	240	420	220	400	200
KFC 225	540	290	520	270	500	250
KFC 250	540	340	520	320	500	300
KFC 280	640	340	620	320	600	300
KFC 315	640	390	620	370	600	350

ATTENUATORS



Model	A	B	C	D	E	F	G
RUKDS 200	440	240	420	220	400	200	900
RUKDS 225	540	290	520	270	500	250	900
RUKDS 250	540	340	520	320	500	300	900
RUKDS 280	640	340	620	320	600	300	900
RUKDS 315	640	390	620	370	600	350	1200