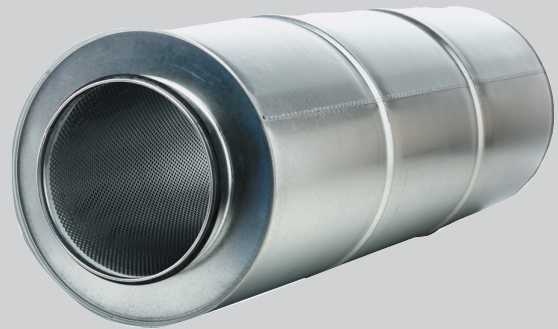


Sonex Circular Sound Attenuators

- Low cost - exceptional performance
- Ex stock availability
- Sheet steel casing and end plates 30 minute fire rating as standard
- Fitted spigot for direct connection to circular ductwork



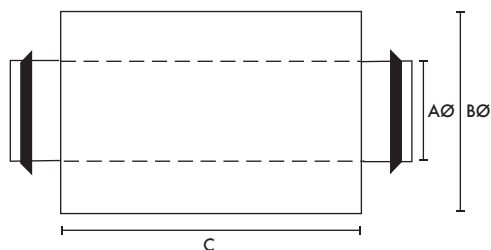
Application

The effective and economic solution for sound attenuation in circular duct systems from 100 to 500mm diameter. With at least three models per size throughout the range the system designer is given complete flexibility of choice allowing a selection which is the best balance of attenuation, size and cost for any application. Sonex Attenuators are fitted with a patented duct seal which enables leak free 'plug-in' connection to rigid ductwork with consequent savings of installation costs. The excellent attenuation characteristics of the Sonex range are achieved without imposing undue system resistance. Pressure losses are little more than those which would occur over a comparable section of straight duct.

Construction

The attenuator consists of a perforated tubular liner manufactured from sheet steel. The liner is enclosed by a thick layer of mineral wool sound absorbing material. Casing and end plates are formed from galvanised sheet steel. Standard models have a 30 minute fire rating (60 minutes also available).

Dimensions, Weights & Insertion Loss



Stock Ref	Dimensions (mm)				Attenuation dB mid Frequency Hz							
	AØ	BØ	C	kg.	63	125	250	500	1K	2K	4K	8k
83010030	100	200	300	2.4	3	3	9	17	23	26	25	13
83010060	100	200	600	4.1	6	9	15	34	40	40	37	18
83010090	100	200	900	6.6	10	13	21	40	45	39	36	16
83012030	125	225	300	2.6	3	3	7	16	20	24	22	17
83012060	125	225	600	4.5	5	8	13	29	35	35	32	22
83012090	125	225	900	7.6	10	12	19	37	40	38	34	32
83015030	150	260	300	2.9	3	3	6	13	19	23	22	16
83015060	150	260	600	5.8	5	7	12	24	30	35	31	20
83015090	150	260	900	9	8	10	15	32	38	37	34	29
83016030	160	260	300	2.9	3	3	6	13	19	23	22	16
83016060	160	260	600	5.8	5	7	12	24	30	35	31	20
83016090	160	260	900	9	8	10	15	32	38	37	34	29
83020060	200	300	600	7	4	6	10	20	27	33	19	17
83020090	200	300	900	10	8	9	14	28	32	35	28	25
83020120	200	300	1200	14	10	12	17	36	41	43	28	26
83025060	250	355	600	8.6	4	5	10	19	25	29	18	17
83025090	250	355	900	12.2	6	7	12	23	30	30	22	19
83025120	250	355	1200	18	8	10	15	32	37	38	26	20
83031060	315	400	600	9.8	4	5	8	15	20	22	17	15
83031090	315	400	900	15	5	7	10	20	30	29	18	16
83031120	315	400	1200	21	7	9	13	22	32	33	19	18
83040090	400	606	900	21	3	5	9	19	26	20	13	11
83040120	400	606	1200	27	6	8	14	24	30	28	17	9
83050090	500	711	900	29	3	4	9	15	23	17	12	11
83050120	500	711	1200	38	5	7	13	18	26	23	15	9